



# Long Range Facilities Plan

2024/25 to 2033/34



School District No. 57 (Prince George)

Summary Presentation



# Purpose of Tonight's Meeting

- Provide an overview of the Consultant's report
- Provide an opportunity for trustees to ask questions regarding the presentation
- Discuss next steps for the Board moving forward with LRFP



# What is the Purpose of the Plan?

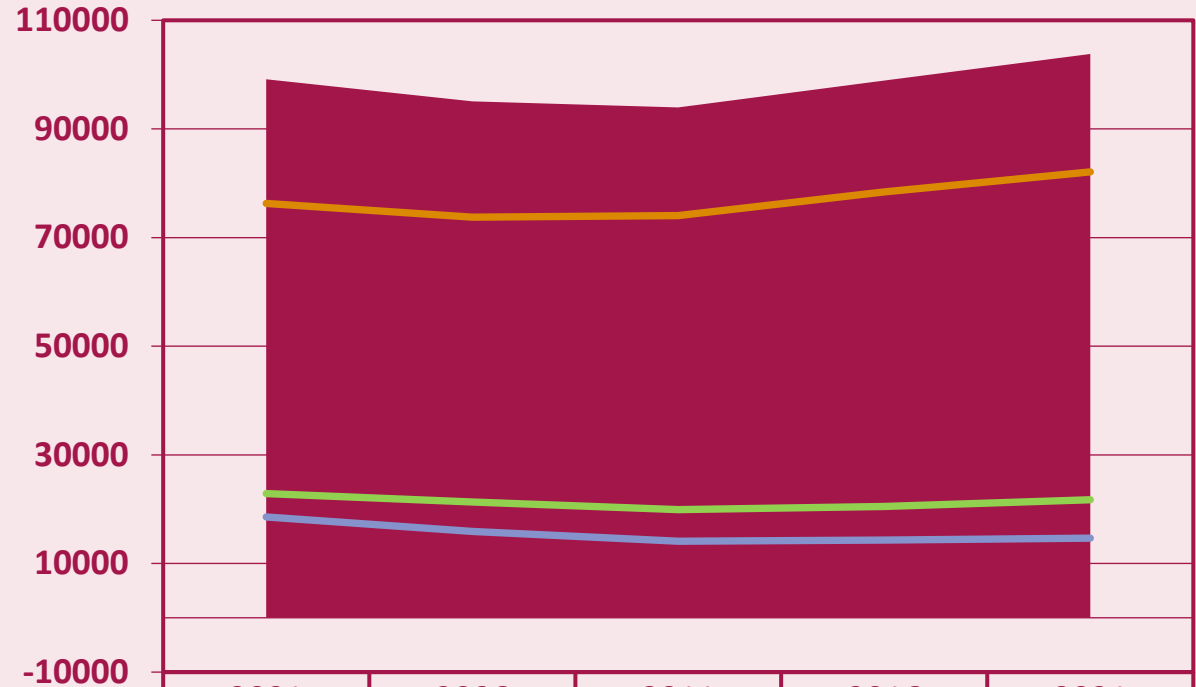
- Provides a mechanism to demonstrate that the district is managing its facilities effectively and efficiently in support of its long term goals
- Guides the Board's annual Capital Plan submission for funding from the Ministry of Education and Child Care (MECC)
- Influences funding decisions of the Board regarding the use of local capital resources
- Assists in determining potential land purchases and/or disposal to support student needs
- Provides a basis for capital funding advocacy beyond the Board's annual Capital Plan submissions to the MECC



# Guiding Principles

- Available district resources support safe and welcoming facilities for students, caregivers and staff
- SD57 assets are operated and maintained using best practices
- Total school enrolment reflects appropriate student capacities
- Under-utilized school space is considered for alternative community use
- Established prerequisite conditions are to be met when considering closure of schools
- Facility renewal is responsive to an enhanced learning environment

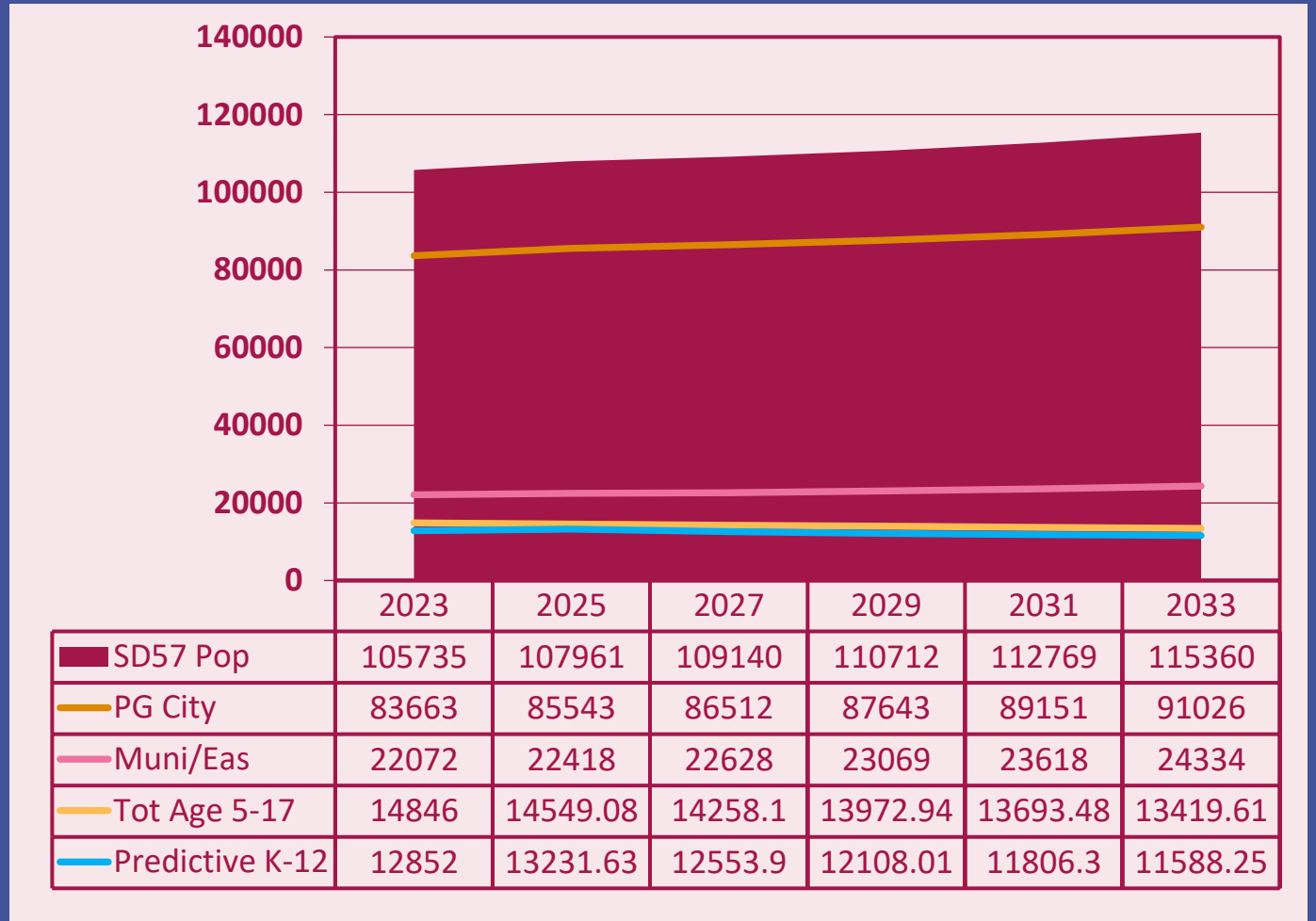
# Community Demographics - Population History



	2001	2006	2011	2016	2021
SD57	99157	95048	93984	98895	103802
PG City	76288	73754	74073	78392	82090
EAs & Muni	22869	21294	19911	20503	21710
Age 5-17	18563	15875	14096	14293	14638

# Community Population Projections

Navigating the future





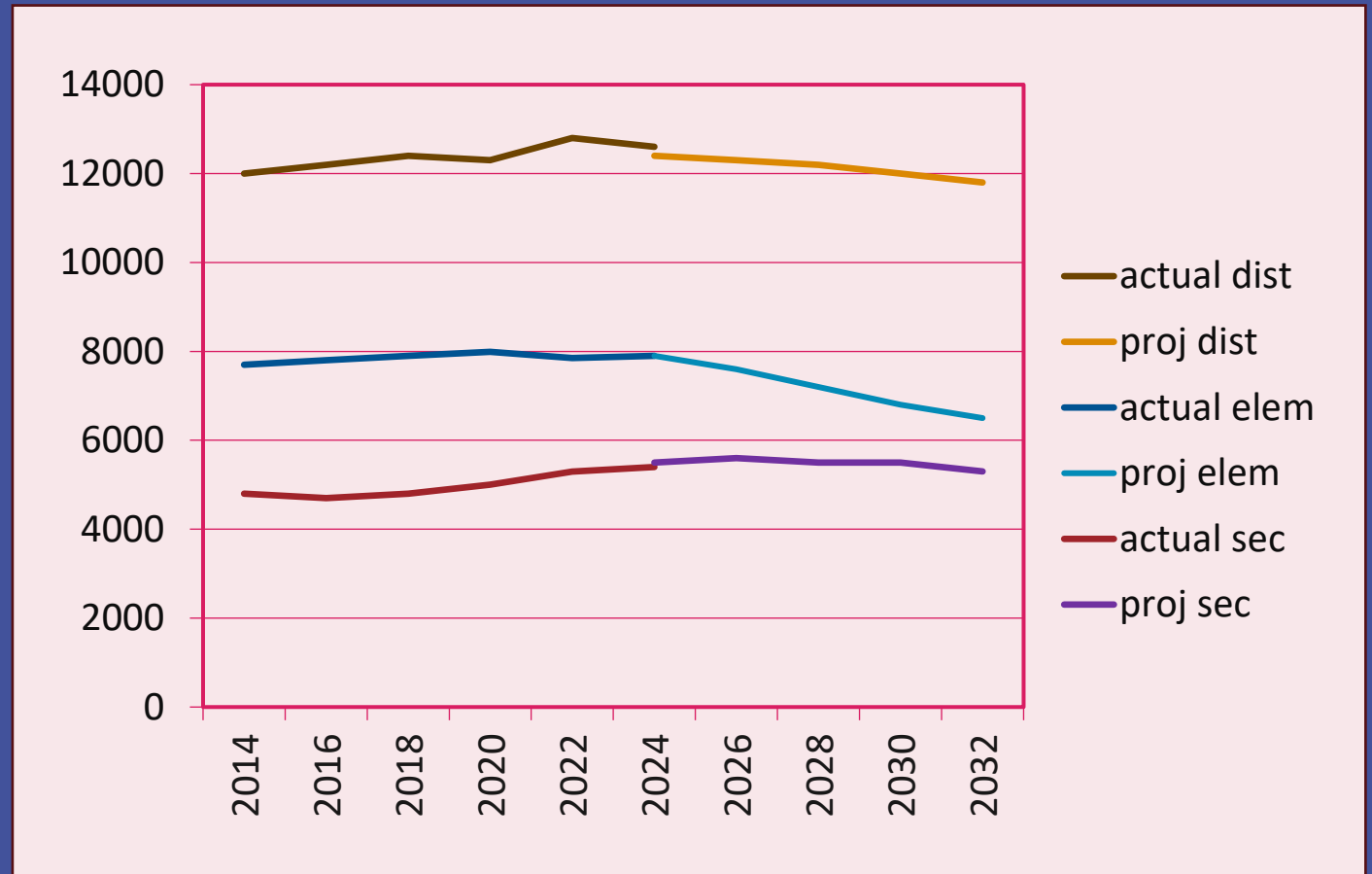
# 10 Year Community Projections

- Total population expected to grow from 105,735 to 115,360 (9.1%)
  - 7,363 in Prince George
  - 2,262 in the 3 rural municipalities and EAs
- Age 5-17 population expected to decrease by 1,426 from 14,846 to 13,420

# District Enrolment Projections to 2033



Navigating the future






# District Enrolment Projections by Family of Schools

Family	2023		2028		2033		10 Year +/-		10 Year % by Family
	Elementary	Secondary	Elementary	Secondary	Elementary	Secondary	Elementary	Secondary	
<b>College Heights</b>	1505	1018	1434	1009	1347	1045	-158	27	-5.2%
<b>DP Todd</b>	1326	784	1155	766	1068	691	-258	-93	-16.6%
<b>Duchess Park</b>	960	881	926	921	860	870	-100	-11	-6.0%
<b>Prince George</b>	1721	1414	1595	1352	1493	1307	-228	-107	-10.7%
<b>Shas Ti Kelly Rd</b>	1529	826	1427	954	1360	890	-169	64	-4.5%
<b>Mackenzie</b>	299	276	252	266	193	240	-106	-36	-24.7%
<b>McBride</b>	82	48	69	57	71	48	-11	0	-8.3%
<b>Valemount</b>	119	71	122	66	116	64	-3	-7	-5.3%



# Enrolment Key Findings

- The overall picture in the next 10 years is generally one of declining numbers, 1,200 FTE or 9.3% less in the next 10 years
  - Decline will be most pronounced at the elementary level with 1,033 or 13.7% fewer students expected
  - Enrolment at the secondary level is expected to have a small increase by 2028 and then decrease by 165 or 3.15% by 2033
- 




# Current Inventory of Assets

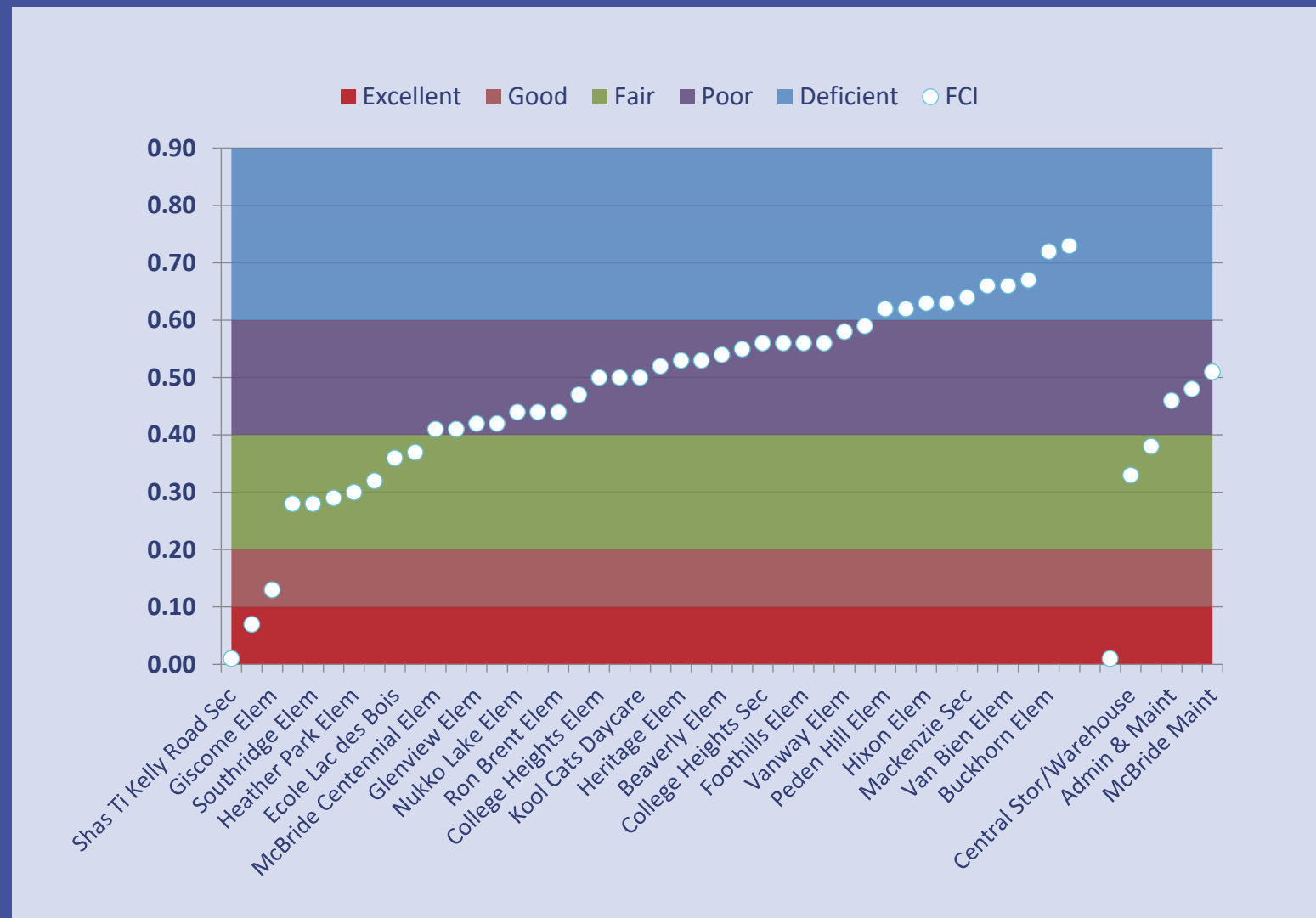
- 32 elementary schools
  - 8 secondary schools
  - Support facilities – District office, Learning services, warehouse, maintenance buildings in Prince George and Valemount
  - Early Learning facilities
  - 14 surplus properties
  - 16 portables
- 

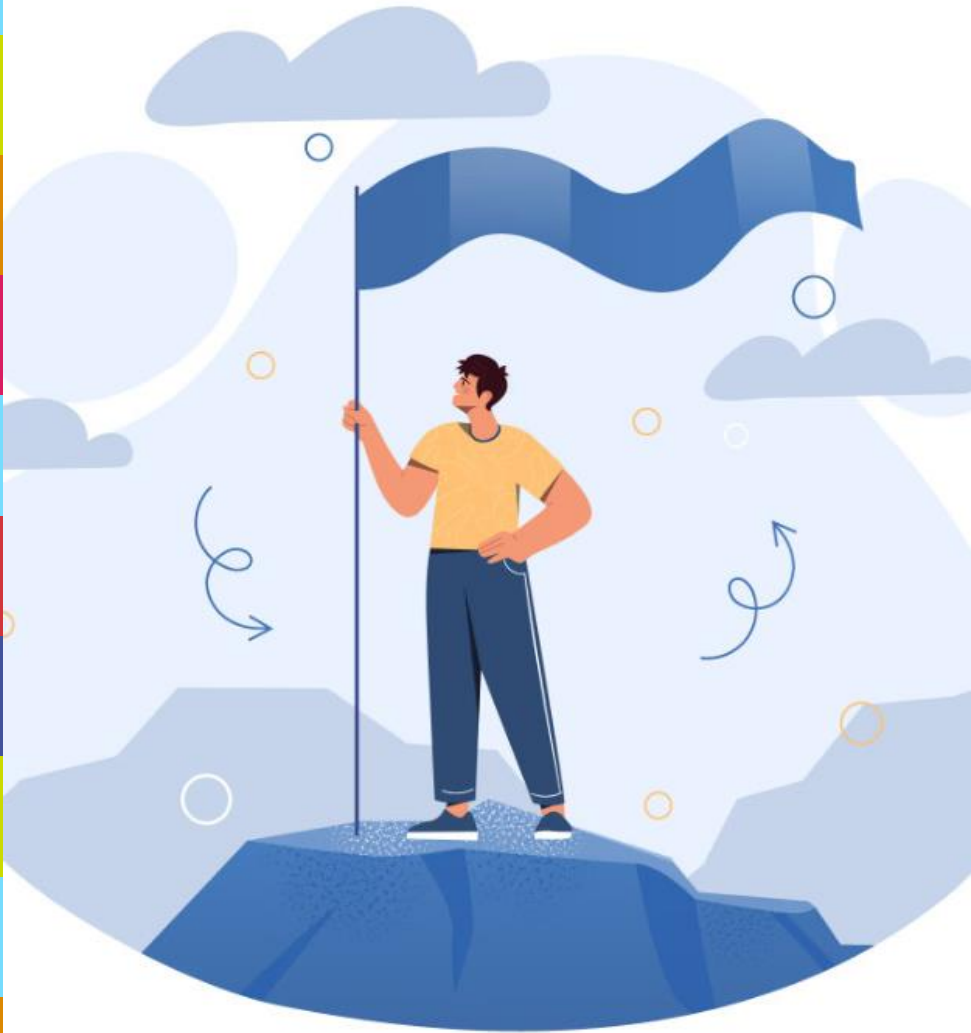


# Facility Condition

- Condition of the building rated using specific site information indicating a range of Deficient to Excellent (Facility Condition Index (FCI))
  - Lower FCI indicates better condition
  - Average age of all buildings is 48.4 years
  - Average age of elementary schools is 53.0 years
  - Average age of secondary schools is 34.2 years
- 

# Facility Condition

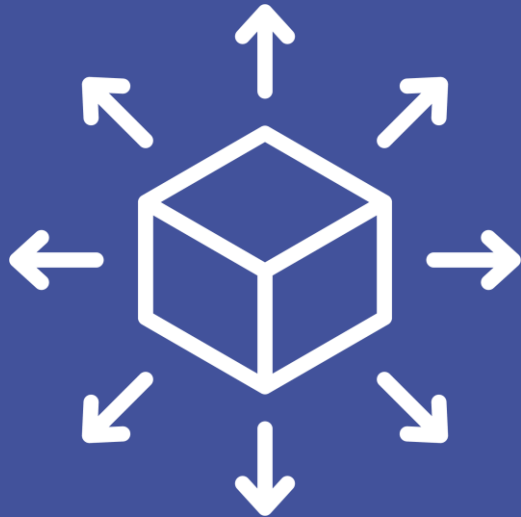




# Recent Successes

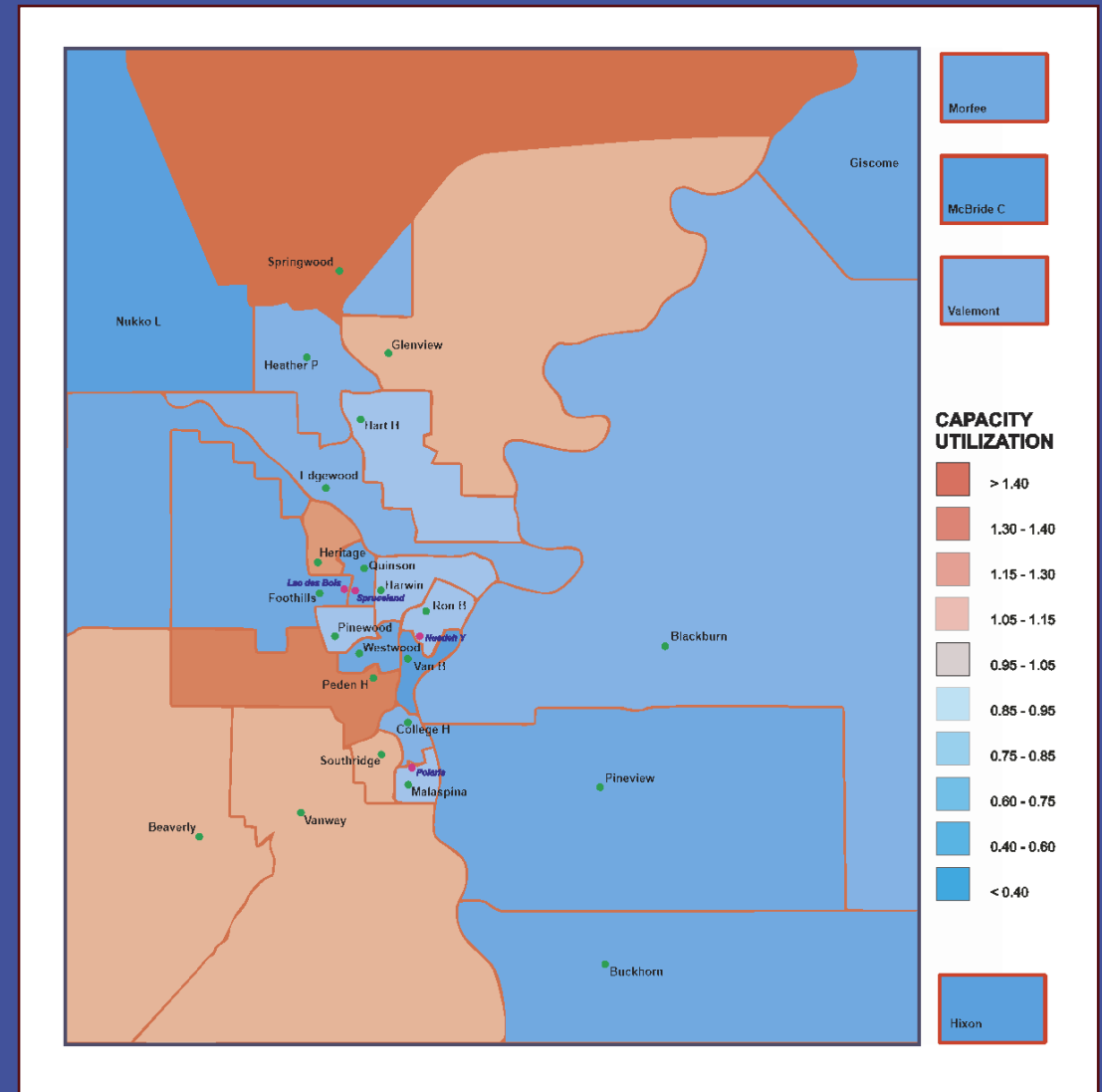
- Shas Ti Kelly Road
- New child care facilities
  - Mackenzie – September 2025
  - Prince George (Austin Road) – September 2026
  - Prince George (Central Fort George ) – September 2027

# Capacity Utilization



- Provides an assessment of how efficiently school spaces and other facility assets are used by the school district
- Looks at the percentage of enrolment compared to school capacity
- Ministry target for schools districts with enrolment greater than 7,500 is 95%, with exceptions for small rural schools
- From 2023 to 2033, the Capacity Utilization for the District is expected to decrease from 89% to 81% increasing the number of surplus spaces from 1,588 to 2,782

# Capacity Utilization of Elementary Schools in 2033








# Key Observations

## College Heights Family

- Beaverly, Vanway, and Southridge will have a negligible to small enrolment decrease and remain overcapacity
- College Heights Elem and Malaspina will have a moderate enrolment decrease and remain under capacity
- College Heights Sec will have a small enrolment increase and remain overcapacity

## DP Todd Family

- Heritage will have a small enrolment decrease and remain overcapacity
  - Other 4 elementary schools will have small to moderate decrease in enrolment and remain under capacity
  - DP Todd will have a moderate decrease and remain overcapacity
- 

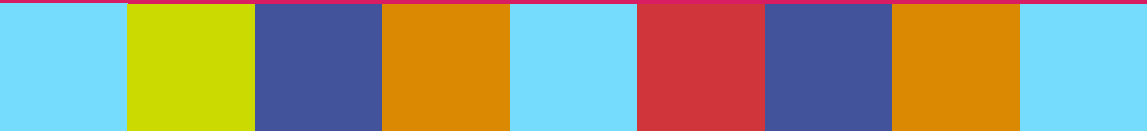


# Key Observations

## Duchess Park Family

- Lac des Bois will have a nominal enrolment increase
- Harwin and Ron Brent will have enrolment decrease and be under capacity
- Duchess Park will have a nominal enrolment decrease and remain under capacity

## Shas Ti Kelly Road Family

- Glenview will have a nominal enrolment decrease and remain overcapacity
  - Springwood will have a small enrolment increase and remain overcapacity
  - Other 3 elementary schools will have a small to moderate decrease in enrolment and remain under capacity
  - Shas Ti Kelly Road will have an enrolment increase by 2028 and be slightly overcapacity by 2033; a small decline in enrolment is expected to bring it close to full capacity
- 

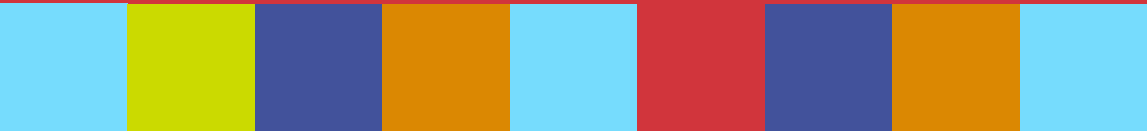


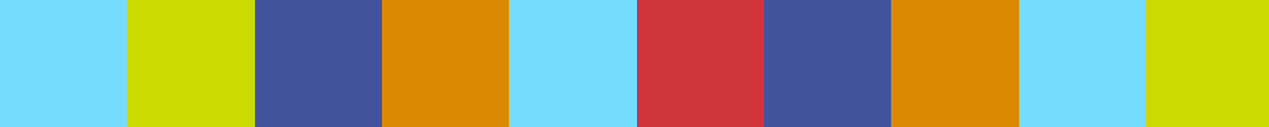
# Key Observations

## Prince George Family

- Peden Hill will have a nominal enrolment increase and remain overcapacity
- all other elementary schools will have some enrolment decrease, and will remain under capacity
- Prince George will have a moderate enrolment decrease, and remain under capacity

## Mackenzie and Robson Valley Families

- Enrolment at both Morfee Elem and Mackenzie Sec will be decreasing; capacity utilization will be at 53% and 44%, respectively
  - Enrolment at McBride Elem will have an overall nominal decrease, and at McBride Sec, a nominal increase by 2028 followed by an equal amount of decrease; capacity utilization will be at 39% and 24%, respectively
  - Enrolment at both Valemount Elem and Valemount Sec will have a nominal decrease; capacity utilization will be at 57% and 43%, respectively
- 



# Preliminary Recommendations



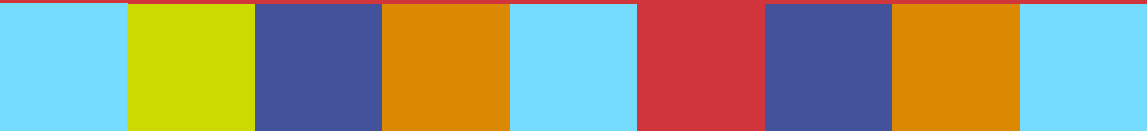


# Important Considerations

- The Plan is a guide for future work and is not a prescriptive document. The district needs to test assumptions prior to making decisions.
- The district is confident that the information is based on the best data available, however, determining exactly how many students there will be in 2033 is not a certainty. Due to changes to regional and local growth patterns, regional and national economies, school age population can shift quickly.
- The Plan considers a 10 year period and recommendations would be considered using a frame of short term, mid-term and long term goals.
- Disposal of property and school closures (including consolidations) are guided by Board policy and legislation requiring consultation.
- Changes in catchment areas are guided by Board policy.



# **Preliminary Recommendation - Disposal of Properties**

- **Vacant lots (Mountain View, Bear Lake, Blackburn Jr Sec, Highglen and West Lake)**
  - **Salmon Valley property**
  - **Shady Valley property**
  - **Portion of Central Fort George property (sub division required)**
- 

# Preliminary Recommendation Limiting Kindergarten Enrolment

## Elementary schools projected to be overcapacity by 2033

- Springwood
- Heritage
- Peden Hill
- Vanway

## Rationale

- reduction in use of portables
- availability of spaces at closest school

# Preliminary Recommendation Adjustment of School Catchments

## Proposed school catchments changes

- College Heights Elementary and Malaspina
- Malaspina and Vanway
- Beaverly and Vanway

## Rationale

- reduce number of portables
- optimize school capacity



# Preliminary Recommendation School Closures

## Proposed School Closures

- Giscome Elementary
- Hixon Elementary
- Van Bien Elementary

## Rationale

- declining enrolment - historical and projected
- available space in other schools
- age and condition of schools

# Preliminary Recommendation

## K-12 School Consolidations

### K-12 School Consolidations

- McBride Elementary and McBride Secondary
- Valemount Elementary and Valemount Secondary
- Morfee Elementary and Mackenzie Secondary

### Rationale

- declining enrolment - historical and projected
- available space in other schools
- age and condition of schools

# Frequently Asked Questions

## How do I navigate the LRF?

The plan provides a short background of the process used to create the Plan, including demographic and growth information. It provides recommendations with brief rationale. The plan also has lengthy appendices to allow the reader to review school specific information, demographic information, and building condition information.

The structure is intended to allow easy access to the Plan's recommendations with the ability to scrutinize the assumptions and information used to support the recommendations.

# Frequently Asked Questions



## What is the condition of our facilities?

The district does a good job in reacting to emergent maintenance issues and in keeping schools healthy and clean. Proactive maintenance, however, is an ongoing challenge. Currently, our Facility Condition Index is 0.55. A lower FCI is better. To bring the FCI to a reasonable level would cost tens of millions of dollars. We continue to be proactive, however, additional dollars are required to address this deficit.

# Frequently Asked Questions

## Does the plan recommend school closures or school consolidations?

Based on enrolment growth patterns and current capacity, the Plan does recommend school closures and school consolidations. These are recommendations only and no closures would occur without a through process as outlined in Board Policy and legislation. Key considerations in any school closure or consolidation include:

- Educational impacts
- Capital resources required to renovate school to provide appropriate facility for additional students
- Student transportation needs
- Operational / on-going cost savings
- Alternative community use of the facility

# Frequently Asked Questions

## Does the plan contemplate catchment boundary changes?

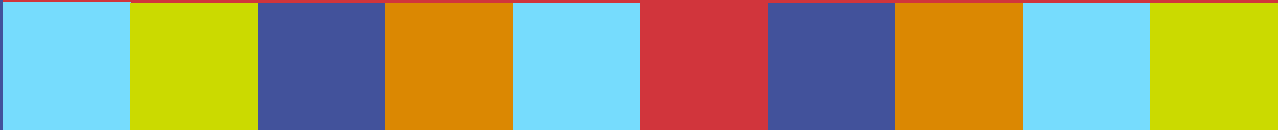
Yes, the Plan contemplates reviewing certain boundaries to ensure that there are balanced numbers in schools. It does not recommend a district-wide review of the entire District. It does recommend reviewing whether the realignment of a feeder school or schools may alleviate capacity issues in the future.

## Does the plan contemplate disposal of vacant properties?

The Plan recommends selling sites that are not required for school use. It recommends against selling sites that could be used for future school purposes.



# Next Steps

- Share the Plan with Rightsholders, partners, employee groups and the public
  - Discussion item at future Regular Public board meeting to determine next steps
- 

# Thank you

School District 57

[www.sd57.bc.ca](http://www.sd57.bc.ca)

